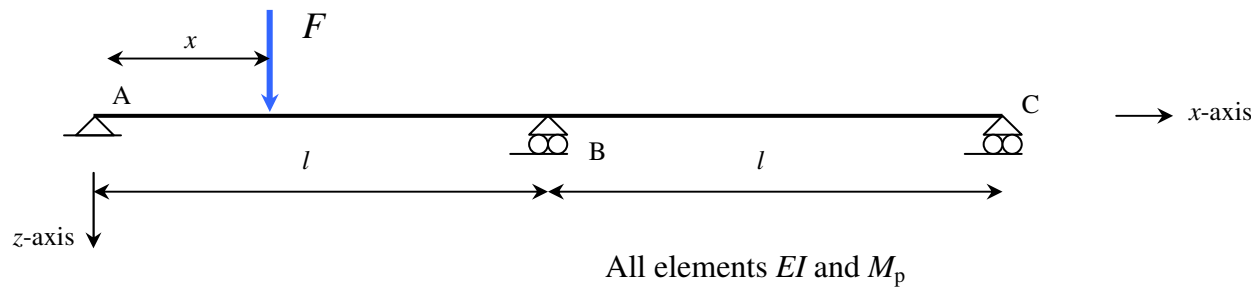


## MOST UNFAVOURABLE POSITION OF THE LOAD



### Question:

- Find the collapse load  $F_p$  and its point of application  $x$
- Find the redundancy in the load carrying capacity on a structural level indicated by the factor  $\beta = \frac{F_p}{F_e}$  for a shape factor  $\alpha = 1,0$

Answer  
 $F_p = 5,828 M_p/l$   
 $\beta = 1,209$