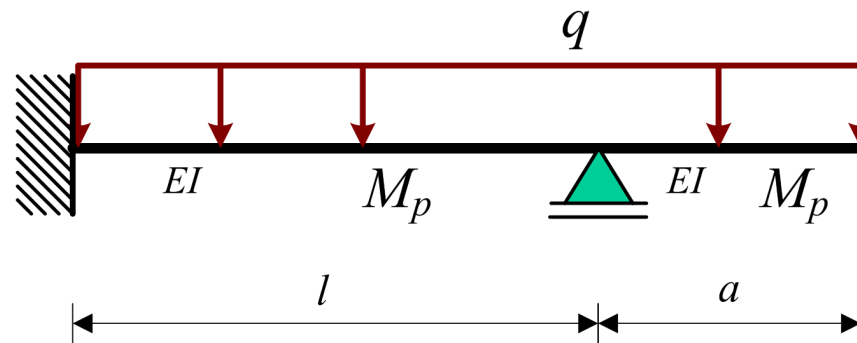


LIMIT LOAD



Question:

- Find the collapse load q_p for the given beam, clearly show the possible mechanisms for $a < \frac{1}{3}l$
- Find the redundancy in the load carrying capacity on a structural level indicated by the factor $\beta = \frac{q_p}{q_e}$ for a shape factor $\alpha = 1,0$

Advice : Use MAPLE to find the solution

Answer
Send your
solution (scan)
by mail